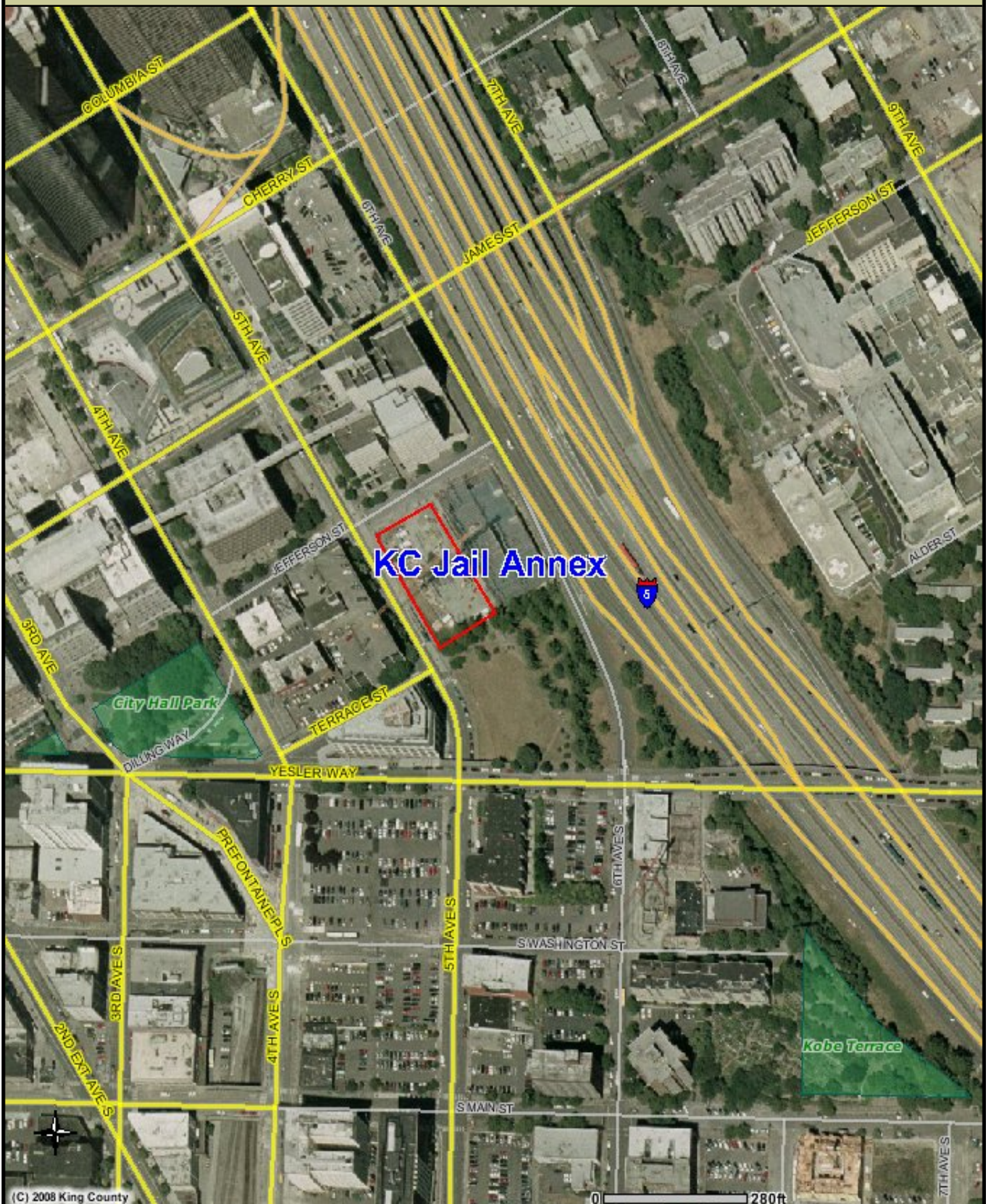


iMAP



(C) 2008 King County

0 280ft

The information included on this map has been compiled by King County staff from a variety of sources and is subject to change without notice. King County makes no representations or warranties, express or implied, as to accuracy, completeness, timeliness, or rights to the use of such information. This document is not intended for use as a survey product. King County shall not be liable for any general, special, indirect, incidental, or consequential damages including, but not limited to, lost revenues or lost profits resulting from the use or misuse of the information contained on this map. Any sale of this map or information on this map is prohibited except by written permission of King County.

Date: 11/6/2008

Source: King County iMAP - Property Information (<http://www.metrokc.gov/GIS/iMAP>)



King County

iMAP

Legend

-  County Boundary
-  Mountain Peaks
-  Highways
-  Forest Production District Boundary
-  Agricultural Production District Boundary
-  Urban Growth Area Line
-  Incorporated Area

- Streets**
-  Highway
-  Arterials
-  Local
-  Lakes and Large Rivers
-  Streams
-  Tribal Lands
-  Parks
- 2005 Color Aerial Photos

The information included on this map has been compiled by King County staff from a variety of sources and is subject to change without notice. King County makes no representations or warranties, express or implied, as to accuracy, completeness, timeliness, or rights to the use of such information. This document is not intended for use as a survey product. King County shall not be liable for any general, special, indirect, incidental, or consequential damages including, but not limited to, lost revenues or lost profits resulting from the use or misuse of the information contained on this map. Any sale of this map or information on this map is prohibited except by written permission of King County.

Date: 11/6/2008

Source: King County iMAP - Property Information (<http://www.metrokc.gov/GIS/iMAP>)



King County